



GIORGIO[®]
& MARIO

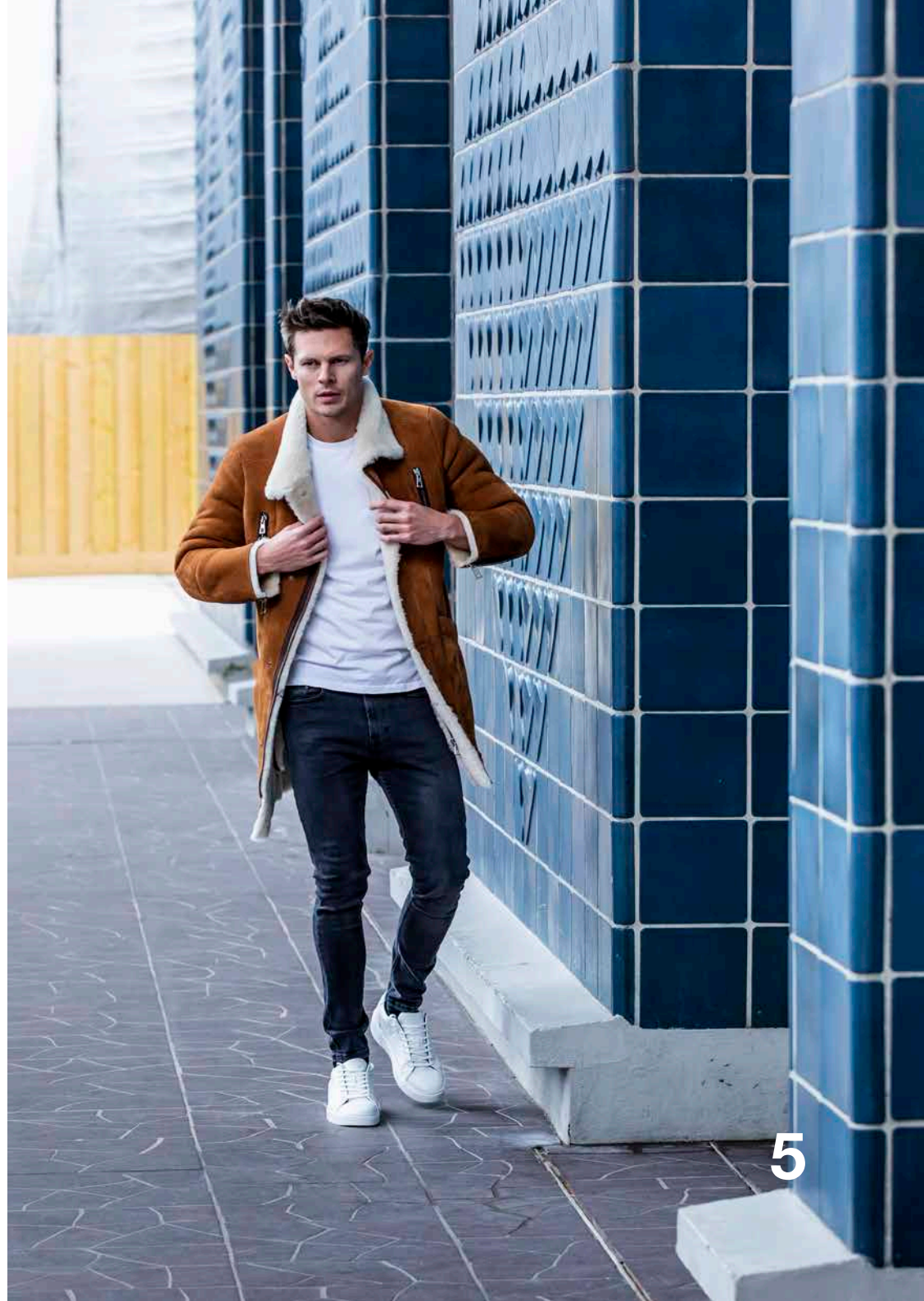
PARIS

**COLLECTION
L'HOMME
AUTOMNE
HIVER**





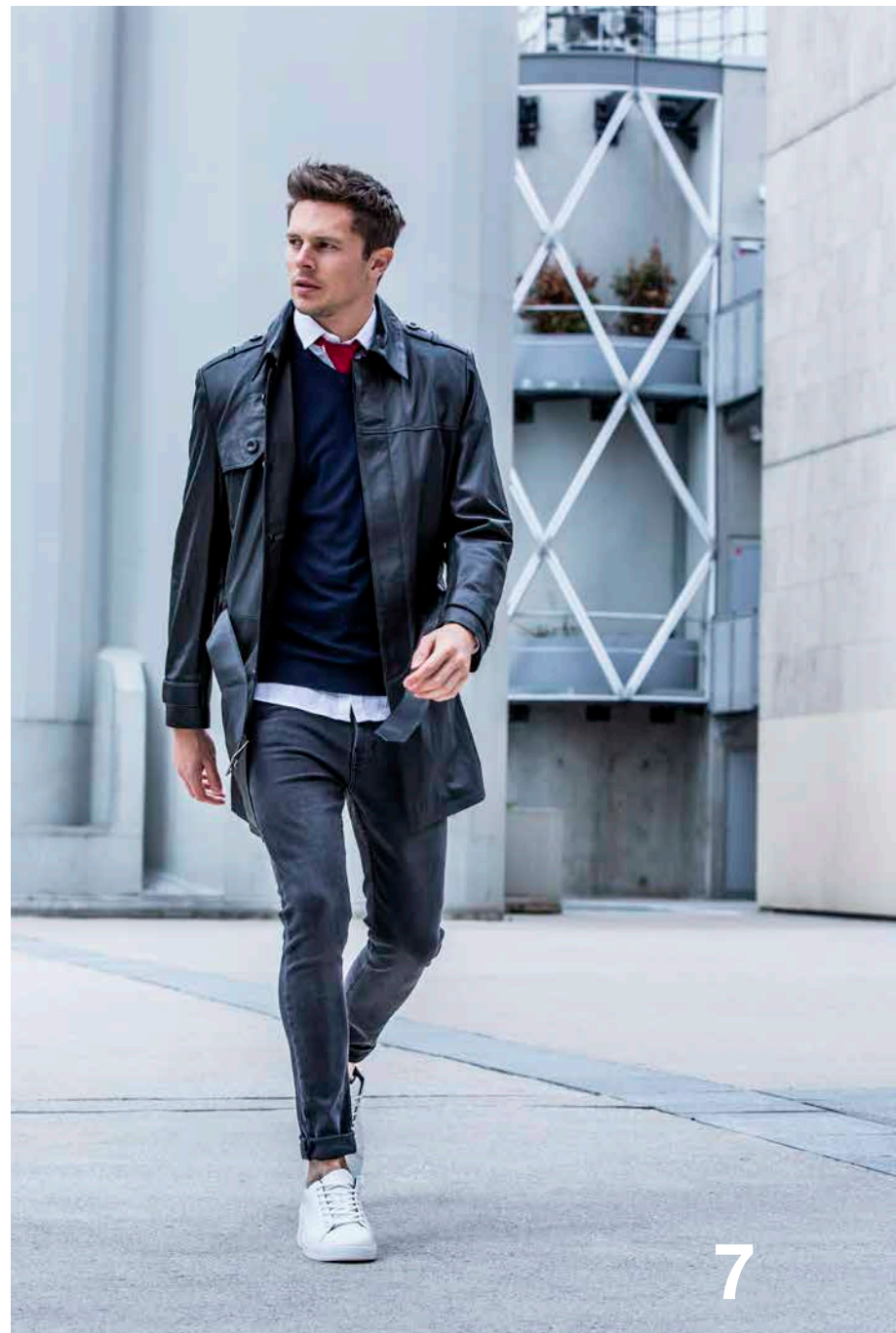
4



5



6



7



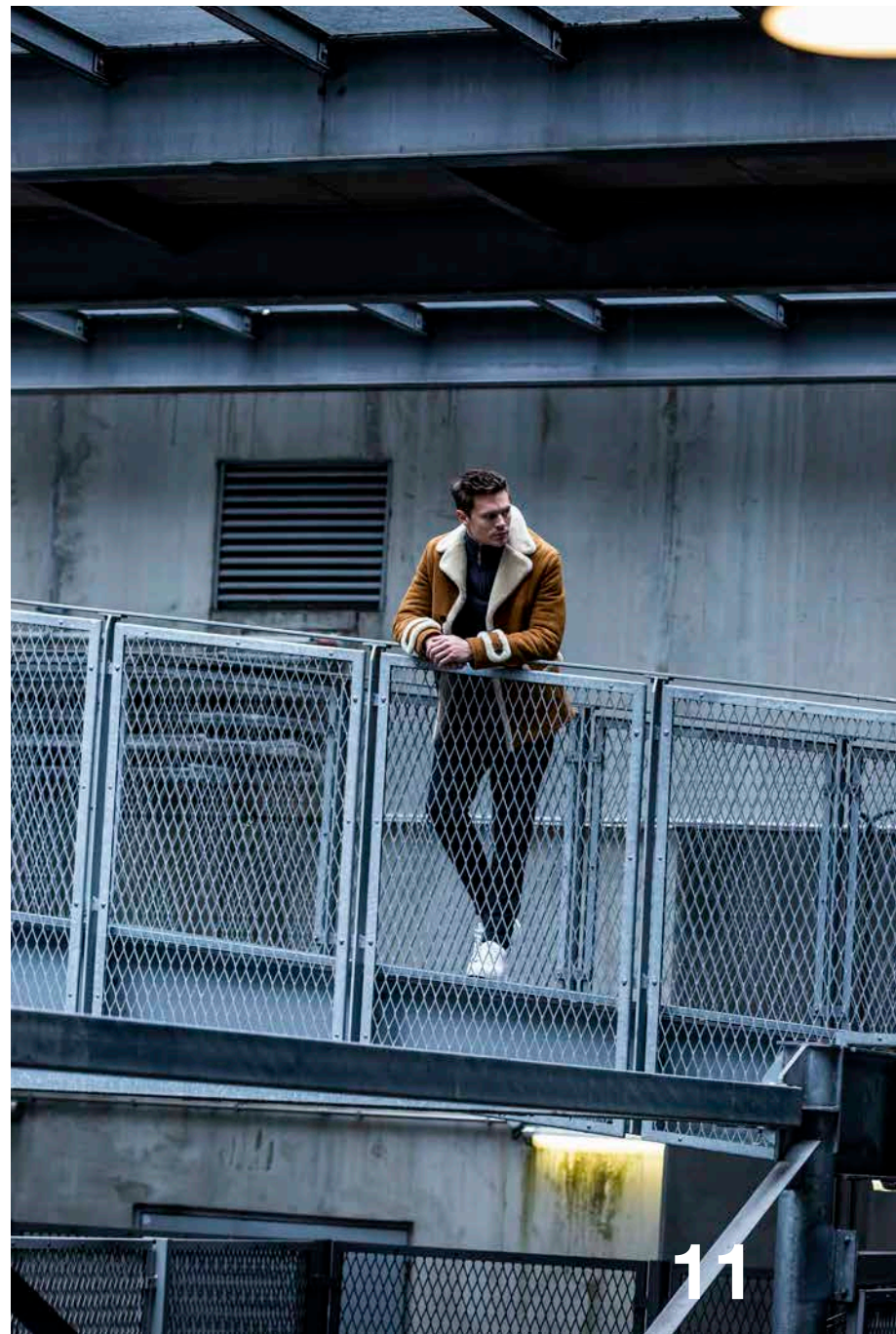
8



9



10



11



12

13



14



15



L'HO MME

16

17





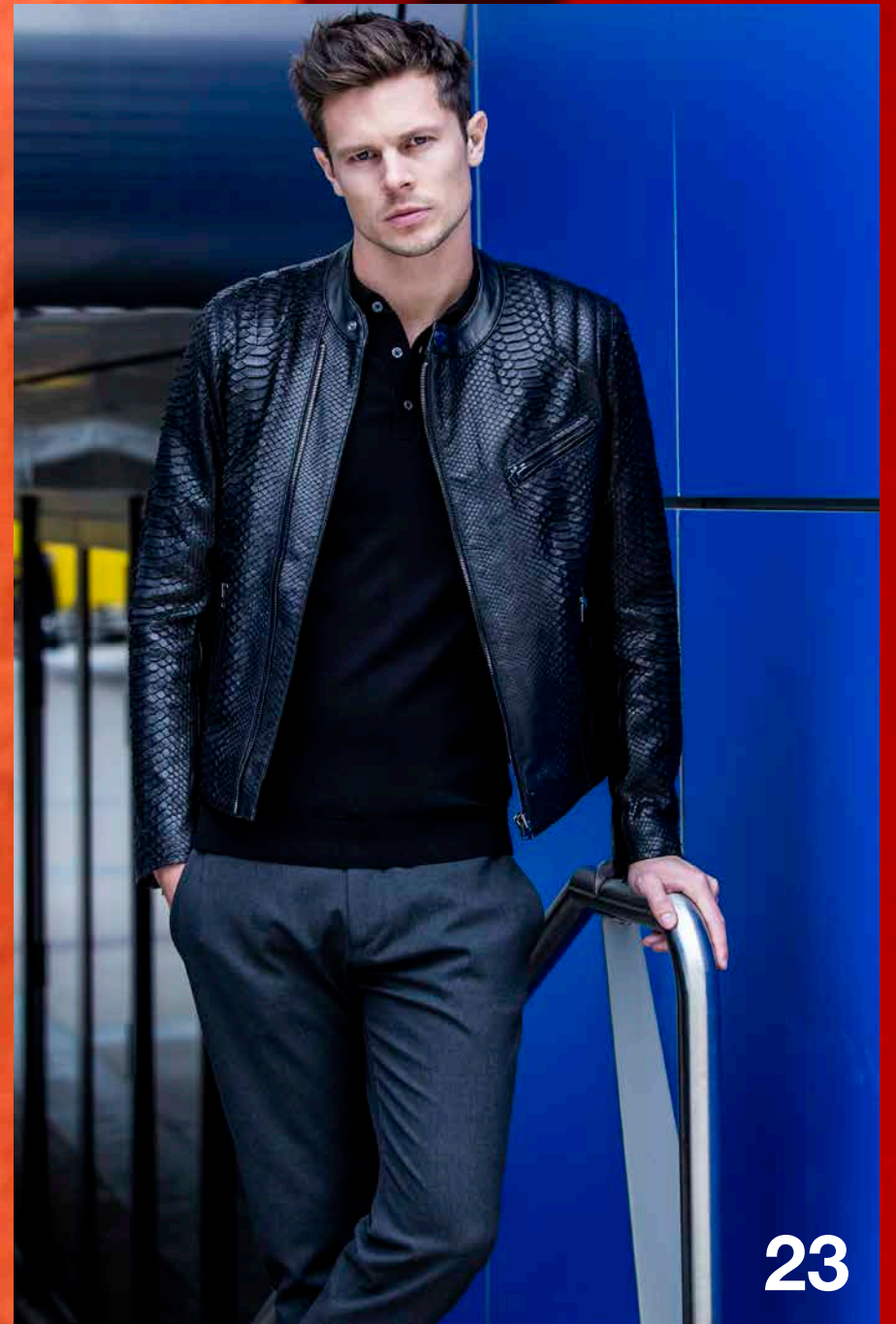
20



21



22



23



24



25



26



27



28





29



30

- P.1 AUGUSTE BOMB
- P.3 RAFAEL
- P.4 NICKOS BOMB
- P.5 PIRVING
- P.6 JOYCE
- P.7 TWIST
- P.8 STUART
- P.10 AMIR
- P.11 CHARLES
- P.12 BAILEY
- P.14 RAMY SOFT VEL
- P.15 GARY
- P.16 JOE
- P.18 CHARLES
- P.19 WHISPER
- P.20 ALEXANDER
- P.21 CROWNY
- P.22 RONALDO AGORA
- P.23 MARIO PYT
- P.24 OLIVER
- P.25 CYRIL
- P.26 AUGUSTE BOMB
- P.27 BAILEY MOSS
- P.28 TED DF
- P.29 DOMY
- P.30 MARIO PYT
- P.32 WHISPER

giorgio-mario.com

 Giorgio & Mario
 @giorgioleatherofficial

Photographie
& Direction Artistique
bertrandbremont.com
Réalisation
advision-studio.com

A man with short brown hair, wearing a black leather puffer jacket with a fur-lined hood, a light grey t-shirt, and dark jeans, leans against a dark metal signpost. The signpost has a red circular sign with a white horizontal bar, indicating 'no entry'. The background is a modern building with a grid-like facade and a brick wall on the left. The overall scene is captured from a low angle, looking up at the man and the building.

GIORGIO[®]
& MARIO

PARIS